

*Byron*  
216

FRONTAGE  
12.5m

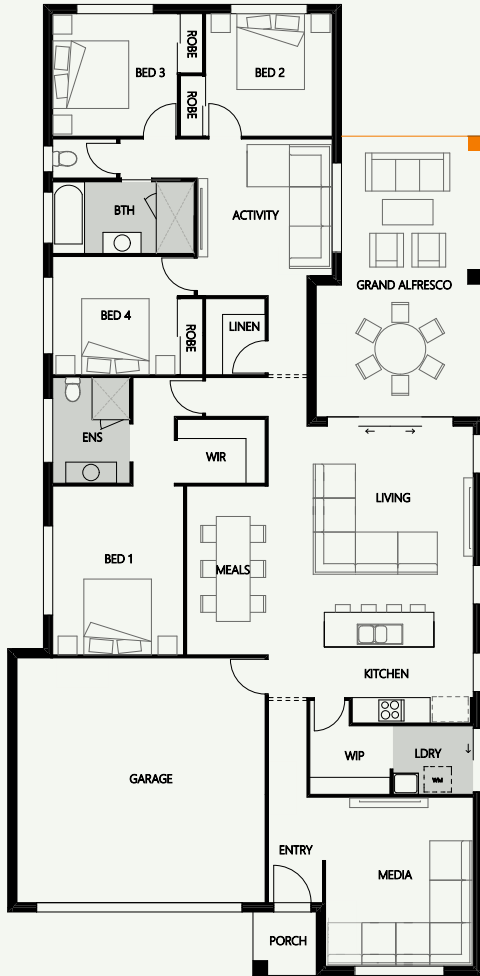
LENGTH 23.00m  
WIDTH 11.25m

TOTAL FLOOR AREA  
216.09m<sup>2</sup>

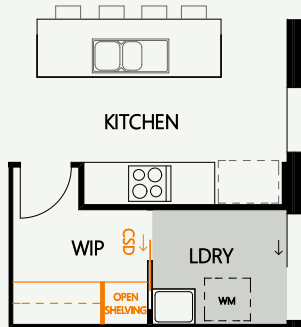
-  4
-  3
-  2
-  2

Bed 1	4.0 x 3.1	Activity	3.7 x 3.2
Bed 2	3.0 x 2.9	Media	4.0 x 3.5
Bed 3	2.9 x 2.9	Meals	4.0 x 1.9
Bed 4	2.9 x 2.8	Kitchen	3.6 x 2.6
Alfresco	3.9 x 3.4	Living	4.0 x 4.0
		Garage	5.8 x 5.8

# BYRON 216 OPTIONS



**GRAND ALFRESCO UPGRADE**  
3.16m x 3.34m (10.55m<sup>2</sup>) alfresco addition



**WALK IN PANTRY UPGRADE**  
+ stone bench + overhead cupboards  
+ open shelving food store + pocket door