



Bronte 231

FRONTAGE
12.5m

LENGTH 22.44m
WIDTH 11.25m

TOTAL FLOOR AREA
230.41m²

-  4
-  3
-  2
-  2

Bed 1	4.5 x 3.6	Activity	3.0 x 2.9
Bed 2	3.1 x 2.9	Media	3.7 x 3.4
Bed 3	3.0 x 2.9	Meals	3.7 x 2.6
Bed 4	3.0 x 2.9	Kitchen	3.6 x 2.6
Alfresco	5.4 x 3.2	Living	5.3 x 4.4
		Garage	5.8 x 5.8

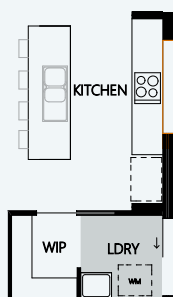
BRONTE 231 OPTIONS



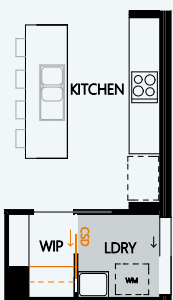
BARN DOORS TO MEDIA



SLIDING DOOR TO BED 1
2.7m sliding door to bed 1



KITCHEN SPLASHBACK WINDOW
1.8m splashback window to kitchen



WALK IN PANTRY UPGRADE
+ stone bench + overhead cupboards + cavity sliding door

