



# Bondi 240

FRONTAGE  
12.5m

LENGTH 24.80m  
WIDTH 11.25m

TOTAL FLOOR AREA  
239.14m<sup>2</sup>

-  4
-  3
-  2
-  2

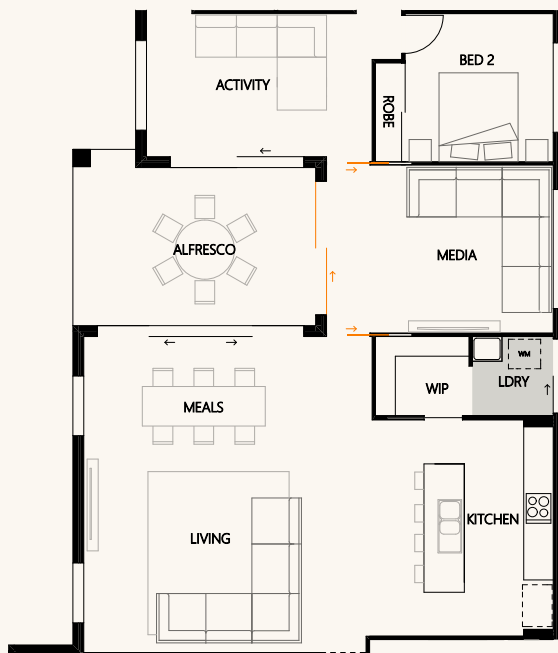
Bed 1	4.2 x 3.4	Activity	3.0 x 3.0
Bed 2	3.0 x 3.0	Media	3.6 x 3.4
Bed 3	3.4 x 3.0	Meals	4.8 x 2.4
Bed 4	3.1 x 2.9	Kitchen	4.1 x 3.1
Alfresco	3.6 x 3.1	Living	4.8 x 4.0
		Garage	5.8 x 5.8

# BONDI 240 OPTIONS



## POSTLESS STACKER DOORS

Add 4.0m & 2.7m postless stacker doors to the alfresco



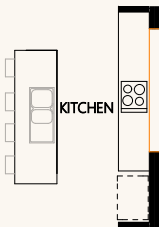
## ALTERNATE MEDIA ROOM

Remove the wall enclosing the media room + add a 2.7 Sliding door to alfresco + add two 820 cavity sliders



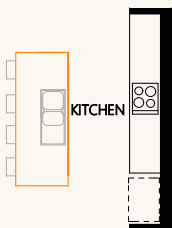
## WALK IN PANTRY UPGRADE

+ stone bench + overhead cupboards + pocket door to ldry



## SPLASHBACK WINDOW

Add a 2400 wide splashback window to the kitchen



## KITCHEN ISLAND UPGRADE

Add a 1200 wide island bench to kitchen option

