

Manly 186

FRONTAGE
12.5m

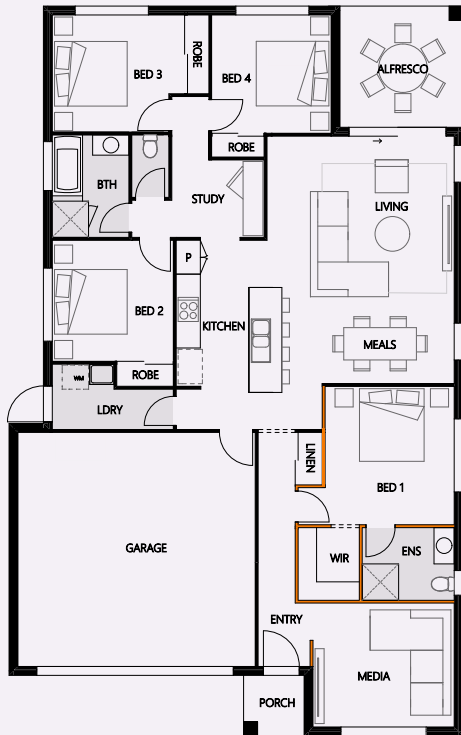
LENGTH 18.08m
WIDTH 11.25m

TOTAL FLOOR AREA
185.90m²

-  4
-  2
-  2
-  2

Bed 1	3.5 x 3.3	Media	4.0 x 3.5
Bed 2	3.0 x 3.0	Meals	3.3 x 2.0
Bed 3	3.0 x 2.9	Kitchen	4.4 x 2.8
Bed 4	3.0 x 2.9	Living	4.1 x 3.7
Alfresco	3.0 x 3.0	Garage	5.8 x 5.8
Study	2.2 x 1.9		

MANLY 186 OPTIONS



FLIP BED 1 & MEDIA
 + 650mm nib wall to entry + 1300 linen



WALK IN PANTRY & BENCHTOP UPGRADE
 Remove cupboard pantry for 840mm of extra bench space + 720mm cavity slider + hamper

